

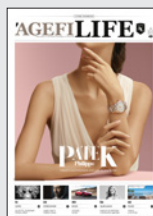
# 'AGEFI INDICES

– MEDIKIT 2019 –



A media edited by

# 'AGEFI



# 'AGEFI INDICES



Agefi INDICES is a monthly supplement to L'Agefi. It covers finance and investment topics as well as macroeconomic analysis and management themes. Drawing on the editorial contribution of a large panel of local and international experts, Agefi INDICES offers analysis, opinions and advice on financial markets, currencies, investment strategies and methodologies, financial products as well as industry and regional investment opportunities.

Each month, Agefi INDICES proposes in-depth coverage of a particular topic from a wide array of themes: from asset management to financial products, from currency markets to independent financial advisory, from banking technologies to pension planning or real-estate management. Interviews with key figures in business and finance bring a new light to current topics.

Regular features include macro perspectives, financial markets analysis, and a two pages section is devoted to reviewing the latest finance publications. Inserted in L'Agefi, Agefi INDICES is distributed to subscribers of the daily newspaper as well as to a large number of target entities. Its readership is composed primarily of finance professionals, business leaders, policy makers and private and institutional investors. In line with its daily sister publication, Agefi INDICES is intended for anyone looking for a better understanding of the diversity and complexity of the world of finance and economics.

Editor in Chief  
**LUC PETITFRÈRE**

**'AGEFI**

Nouvelle Agence Économique  
et Financière SA | [www.agefi.com](http://www.agefi.com)  
CHE-217.728.826 TVA

Route de la Chocolatière 21  
Case postale 61  
1026 Echandens - Denges

Tel. +41 21 331 41 41  
Fax +41 21 331 41 10  
[agefi@agefi.com](mailto:agefi@agefi.com)

# AGEFI INDICES

## REGULAR COLUMNS

Agefi INDICES consists of the following regular columns: The Column, ISAG Consensus (monthly forecasts of 19 investment institutions in Geneva), The Topic, In Law, Opinion, Interview, Cybersecurity, Market, Leadership, Startup - Genilem, Books.

## DIFFUSION

10 ISSUES A YEAR

### CIRCULATION

8'350 copies

### DISTRIBUTION

L'AGEFI subscribers and newsstands (Naville & Valora) - Extended circulation: additional contacts targeted on the eco-financial sector in Western Switzerland - Geneva Airport and airlines companies Private clinics and events of the Swiss Medical Network group, Events organised by L'AGEFI or where L'AGEFI is a media partner ([www.agefi.com/events](http://www.agefi.com/events)). Also available in E-Paper version at [www.agefi.com](http://www.agefi.com), iPad application ([www.agefi.com/app](http://www.agefi.com/app)) and on LeKiosk.fr.

### AGEFI.COM

### AGEFI.COM/AGEFI-INDICES

1'670'371 page views and 916'062 unique visitors per year

ISSUES	PUBLICATION DATE	THEMES	MATERIAL DEADLINE	EVENTS AND INCREASED CIRCULATION
01	28.01.2019	<b>FINANCIAL PRODUCTS I</b> (Investment funds / ETF / Structured Products)	15.01.2019	Finanz'18 (31.01-01.02), Zurich
02	25.02.2019	<b>INSTITUTIONNAL ASSET MANAGEMENT I / PENSIONS</b>	12.02.2019	Trading Forum, Geneva
03	25.03.2019	<b>FINANCIAL PRODUCTS II</b> (Investment funds / ETF / Structured Products)	12.03.2019	
04	29.04.2019	<b>INSTITUTIONNAL ASSET MANAGEMENT II / PENSIONS</b>	16.04.2019	9e Forum des Courtiers en Assurances (17.05), Lausanne
05	27.05.2019	<b>FINANCIAL PRODUCTS III</b> (Investment funds / ETF / Structured Products)	14.05.2019	Bol d'Or Mirabaud (08-10.06), Geneva Salon PPS (06-07.06), Zurich
06	24.06.2019	<b>INSTITUTIONNAL ASSET MANAGEMENT III / PENSIONS</b>	11.06.2019	
07	02.09.2019	<b>FINANCIAL PRODUCTS IV</b> (Investment funds / ETF / Structured Products) <b>&amp; INDEPENDENT ASSET MANAGEMENT</b>	20.08.2019	FORUM (13.09), Yverdon-les-Bains Investora (26-27.09), Zurich
08	07.10.2019	<b>INSTITUTIONNAL ASSET MANAGEMENT IV / PENSIONS</b>	24.09.2019	
09	04.11.2019	<b>FINANCIAL PRODUCTS V</b> (Investment funds / ETF / Structured Products) <b>&amp; COMMODITIES</b>	22.10.2019	Economic Forum of Glion (09.11)
10	02.12.2019	<b>TOP 100 FUND MANAGERS</b>	19.11.2019	

# AGEFI

Nouvelle Agence Économique  
et Financière SA | [www.agefi.com](http://www.agefi.com)  
CHE-217.728.826 TVA

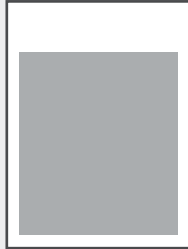
Route de la Chocolatière 21  
Case postale 61  
1026 Echandens - Denges

Tel. +41 21 331 41 41  
Fax +41 21 331 41 10  
[agefi@agefi.com](mailto:agefi@agefi.com)

# AGEFI INDICES

## ADVERTISING RATES

PRICE IN CHF QUOTED GROSS (+VAT 7.7%)



### Mock front page

281 x 332 mm

22'500.-

### Mock front page double sided

281 x 332 mm / 281 x 396 mm

26'500.-



### Front page banner

281 x 80 mm

281 x 100 mm

5'000.-

6'250.-

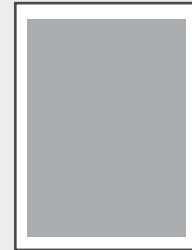
### Banner under contents

281 x 60 mm

281 x 100 mm

3'900.-

5'750.-



### 1/1 Full page

281 x 396 mm

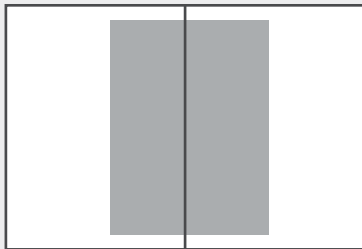
15'000.-

### 1/1 Cover - second

16'000.-

### 1/1 Cover - fourth

18'000.-



### Centered page

281 x 396 mm

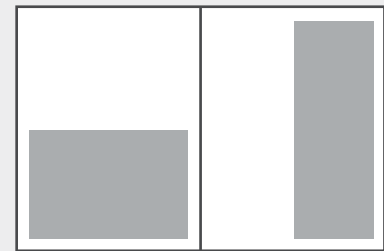
16'000.-



### 2/1 Panoramic double page

582 x 396 mm

17'000.-



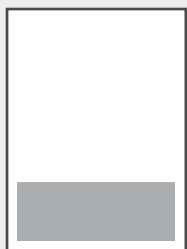
### 1/2 page - horizontal

281 x 198 mm

8'500.-

### 1/2 page - vertical

138 x 396 mm



### 1/4 page banner

281 x 100 mm



### 1/4 page - horizontal

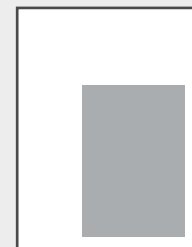
186 x 147 mm



### 1/4 page - vertical

138 x 198 mm

4'500.-



### Junior page

186 x 246 mm

13'500.-

Size: width x height

# AGEFI

Nouvelle Agence Économique  
et Financière SA | www.agefi.com  
CHE-217.728.826 TVA

Route de la Chocolatière 21  
Case postale 61  
1026 Echandens - Denges

Tel. +41 21 331 41 41  
Fax +41 21 331 41 10  
agefi@agefi.com

# AGEFI INDICES

## RATES

<b>INSERTS AND FRONT PAGE GATEFOLDER</b>	Offer upon request															
<b>PRESCRIBED POSITION</b>	+ 10%															
<b>COMMISSION</b>	5% agency commission, not cumulative with RACHA II For other countries: see with your international representative office															
<b>DISCOUNT BASED ON TURNOVER*</b> <small>*Based on cumulative turnover in the following publications : L'Agefi and Agefi INDICES Indices.</small>	<table border="1"> <tr> <td>From</td> <td>CHF 7'500.-</td> <td>3%</td> <td>CHF 40'000.-</td> <td>10%</td> </tr> <tr> <td></td> <td>CHF 12'500.-</td> <td>4%</td> <td>CHF 60'000.-</td> <td>15%</td> </tr> <tr> <td></td> <td>CHF 20'000.-</td> <td>6%</td> <td>CHF 80'000.- and up</td> <td>20%</td> </tr> </table>	From	CHF 7'500.-	3%	CHF 40'000.-	10%		CHF 12'500.-	4%	CHF 60'000.-	15%		CHF 20'000.-	6%	CHF 80'000.- and up	20%
From	CHF 7'500.-	3%	CHF 40'000.-	10%												
	CHF 12'500.-	4%	CHF 60'000.-	15%												
	CHF 20'000.-	6%	CHF 80'000.- and up	20%												

## MATERIAL, TECHNICAL DATA AND TRANSMISSION

<b>MATERIAL</b>	Hight definition PDF 300dpi + proofs (pdf/x-1a :2001)
<b>LANGUAGE OF PUBLICATION</b>	French
<b>TRANSMISSION DEADLINE:</b> - CLOSING FOR ADVERTS - MATERIAL - CANCELLATION	3 weeks prior publication As per calendar on page 3 At least 3 weeks prior publication in order not to incur cancellation fees
<b>TRANSMISSION OF MATERIAL VIA E-MAIL</b>	To your commercial contact (n.fouchault@agefi.com or b.leuenberger@agefi.com) + d.planchon@agefi.com

## CONDITIONS

<b>GENERAL SALES CONDITIONS</b>	agefi.com/cgv	<b>GENERAL ASSP CONDITIONS</b>	vsw-assp.ch
---------------------------------	---------------	--------------------------------	-------------

## COMMERCIAL CONTACTS

### FRENCH SPEAKING SWITZERLAND - TICINO – INTERNATIONAL

#### NORBERT FOUCHAULT

Cel.: +41 79 964 65 66  
Tel.: +41 21 331 41 25  
Fax: +41 21 331 41 10  
n.fouchault@agefi.com

### EASTERN SWITZERLAND

#### BÉATRICE LEUENBERGER

Cel.: +41 79 705 26 93  
Tel.: +41 44 254 39 21  
Fax: +41 44 254 39 29  
b.leuenberger@agefi.com

## INTERNATIONAL REPRESENTATIVE OFFICES

DEUTSCHLAND	BELGIEN	FRANCE	GROSSBRITANNIEN
<b>MERCURY PUBLICITY (DEUTSCHLAND) GMBH</b> Seifgrundstrasse 2 D - 61348 Bad Homburg v. d. H. Tel: +49 6172 9664 0 Fax: +49 6172 9664 49 s.fedrowitz@mercury-publicity.de www.mercury-publicity.de	<b>MEDIACONTACT INTERNATIONAL</b> Place Guy d'Arezzo 17 B -1180 Bruxelles Tel: +32 2 343 43 71 Fax: +32 2 343 43 76 j.mineur@mediacontact.net www.mediacontact.net	<b>AFFINITY MEDIA</b> 55, Rue de Maubeuge F - 75009 Paris Tel: +33 1 53 05 94 01 Fax: +33 1 53 05 94 06 frederic.lahalle@affinity-media.fr www.affinity-media.fr	<b>PRIME MEDIA INTERNATIONAL</b> 31, Old Campton Street UK - London, W1D 5JT Tel: +44 207 287 29 04 Fax: +44 207 734 74 59 Mobile: +44 797 473 46 07 rpavitt@prime-int.co.uk www.prime-int.co.uk

OTHER MEDIA AGEFI - WWW.AGEFI.COM/PUBLICATIONS

**AGEFI**

**AGEFIIMMO**

**AGEFILIFE**

**AGEFI**

Nouvelle Agence Économique  
et Financière SA | www.agefi.com  
CHE-217.728.826 TVA

Route de la Chocolatière 21  
Case postale 61  
1026 Echandens - Denges

Tel. +41 21 331 41 41  
Fax +41 21 331 41 10  
agefi@agefi.com